

Lifting Magnets



The Caldwell Group

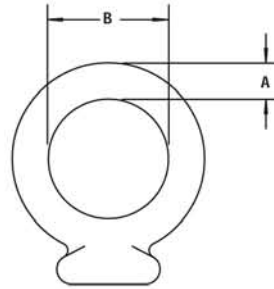
Model APL - Automatic Lift/Release Magnets



Unit shown at max overall height

PRODUCT FEATURES:

- For use on flat material only.
- Hands-free operation ideal for areas with limited access.
- Completely self contained.
- Automatic on/off occurs as you raise and lower the unit, no manual activation required.
- Permanent magnets holding power not affected by power outages or battery life.
- Conforms to ASME B30.20.



SPECIFICATIONS

Model Number	Lift Capacity Plate (lbs.)	Length (in.)	Width (in.)	Overall Height (in.)		Bail Opening (in.)		Weight (lbs.)
				Minimum	Maximum	A	B	
APL-150	900	10-5/16	9-9/16	13-3/8	16-5/8	3/4	2	154
APL-152	1,650	11-3/4	13-15/16	16-15/16	21-1/2	13/16	1-7/8	343
APL-154	3,600	18-3/16	13-15/16	17-5/8	22-1/8	1	2-3/8	585
APL-156	5,800	24	13-15/16	17-5/8	22-1/8	1	2-3/8	717

WARNING

All capacities are based on lifting clean, smooth, flat low-carbon steel plate with the full area of the magnet's lifting surface in contact with the load. Derating is required for plates or other loads with rust or scale. Do not use on material thinner than 1/4".

Note: When lifting 4' x 8' sheets or any sheets over 4' x 8', use 2 or more lifts on a spreader bar to prevent sheet flexing, sagging, or peel-off. Material less than 3/8" thick is susceptible to magnet bleed through, resulting in two sheets lifted at once.



Distributed By
 McLaughlin Hoist & Crane
 1850 Larkin Williams Rd.
 Penton, MO 63026
 (636) 343-9700
 www.slcrane.com

Rig-Master® Section
 Master Catalog MC-607

Lifting Magnets



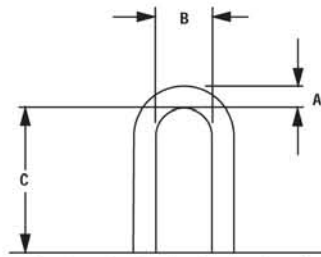
The Caldwell Group

Model PNL - Permanent Lifting Magnets



PRODUCT FEATURES:

- On/off rare earth design.
- For use on flat or round material.
- Completely self contained.
- Permanent magnets holding power not affected by power outages or battery life.
- Conforms to ASME B30.20.



SPECIFICATIONS

Model Number	Lift Capacity (lbs.)		Magnet (in.)		Overall Height (in.)	Bail Opening (in.)			Handle Length (in.)	Weight (lbs.)
	Plate	Round	Length	Width		A	B	C		
PNL220	220	110	3-5/8	2-5/8	6-5/8	3/16	1-1/2	1-3/8	5-7/8	7
PNL660	660	330	6-3/8	3-5/8	8-7/8	1/2	1-3/4	2-3/8	6-7/8	22
PNL1300	1,300	660	9-1/8	4-7/8	8-7/8	5/8	2-1/4	3-1/2	6-3/4	53
PNL2200	2,200	1,100	10-5/8	7-1/8	8-7/8	3/4	3-3/4	4-3/4	10-1/8	110
PNL4400	4,400	2,200	14-7/8	9-1/4	18	7/8	4-3/4	6	16-3/4	276
PNL6600	6,600	3,300	18-1/16	11-1/4	22-1/4	1-7/16	5-3/4	7-1/4	20-5/8	485

HOLDING VALUE & MAX SHEET SIZE FOR SPECIFIED MATERIAL THICKNESS

Model Number	SHEET THICKNESS (Capacity in lbs. / Size in ft.)													
	1/4"		3/8"		1/2"		3/4"		1"		2"		3"	
	Cap.	Size	Cap.	Size	Cap.	Size	Cap.	Size	Cap.	Size	Cap.	Size	Cap.	Size
PNL220	180	4 x 4.5	220	4 x 3.5	220	3 x 3.5	220	2 x 3	220	2 x 2.5	220	1 x 2.5	220	1 x 1.5
PNL660	270	4 x 6	500	4 x 8	615	4 x 7.5	660	4 x 5	660	4 x 4	660	3 x 2.5	660	2 x 2.5
PNL1300	-	-	-	-	655	4 x 8	1000	4 x 8	1300	4 x 8	1300	4 x 4	1300	4 x 2.5
PNL2200	-	-	-	-	-	-	-	-	1300	4 x 8	2200	4 x 7	2200	4 x 4.5
PNL4400	-	-	-	-	-	-	-	-	-	-	2625	4 x 8	4400	4 x 8
PNL6600	-	-	-	-	-	-	-	-	-	-	4084	5 x 10	6125	5 x 10

WARNING

All capacities are based on lifting clean, smooth, flat low-carbon steel plate with the full area of the magnet's lifting surface in contact with the load. Derating is required for plates or other loads with rust or scale. Do not use on material thinner than 1/4".

Note: When lifting 4' x 8' sheets or any sheets over 4' x 8', use 2 or more lifts on a spreader bar to prevent sheet flexing, sagging, or peel-off. Material less than 3/8" thick is susceptible to magnet bleed through, resulting in two sheets lifted at once.



Distributed By
MCLaughlin Hoist & Crane
1850 Larkin Williams Rd.
Fenton, MO 63026
(636) 343-9700
www.slcrane.com

Rig-Master® Section
Master Catalog MC-607

Lifting Magnets



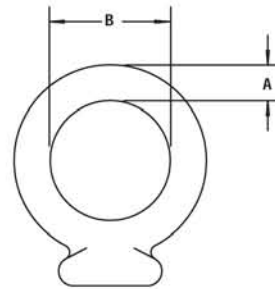
The Caldwell Group

Model CLM - Constant Lifting Magnets



PRODUCT FEATURES:

- Permanent magnet is always on.
- For use on flat material only.
- Permanent magnets holding power not affected by power outages or battery life.
- Non-marring roller cam release.
- Conforms to ASME B30.20 standards.



SPECIFICATIONS

Model Number	Lift Capacity Plate (lbs.)	Magnet (in.)		Bail Opening (in.)		Handle Length (in.)	Weight (lbs.)
		Length	Width	A	B		
CL0400	400	6	3-1/2	5/8	1-5/16	9-1/4	12
CL1000	1,000	8-11/16	5	5/8	1-5/16	9-1/4	28
CL1500	1,500	10-1/2	7	5/8	1-5/16	20	42
CL3000	3,000	15-3/4	10	5/8	1-5/16	20	105

HOLDING VALUE & MAX SHEET SIZE FOR SPECIFIED MATERIAL THICKNESS

Model Number	SHEET THICKNESS (Capacity in lbs. / Size in ft.)													
	3/16"		1/4"		3/8"		1/2"		3/4"		1"		2"	
	Cap.	Size	Cap.	Size	Cap.	Size	Cap.	Size	Cap.	Size	Cap.	Size	Cap.	Size
CL0400	185	4 x 6	325	4 x 8	400	4 x 6.5	400	4 x 5	400	4 x 3	400	3 x 3	400	2 x 2.5
CL1000	185	4 x 6	325	4 x 8	495	4 x 8	655	4 x 8	1000	4 x 8	1000	4 x 6	1000	4 x 3
CL1500	185	4 x 6	325	4 x 8	495	4 x 8	655	4 x 8	1000	4 x 8	1500	5 x 7	1500	4 x 4.5
CL3000	185	4 x 6	325	4 x 8	495	4 x 8	655	4 x 8	1000	4 x 8	2042	5 x 10	3000	4 x 9

WARNING

All capacities are based on lifting clean, smooth, flat low-carbon steel plate with the full area of the magnet's lifting surface in contact with the load. Derating is required for plates or other loads with rust or scale. Do not use on material thinner than 1/4".

Note: When lifting 4' x 8' sheets or any sheets over 4' x 8', use 2 or more lifts on a spreader bar to prevent sheet flexing, sagging, or peel-off. Material less than 3/8" thick is susceptible to magnet bleed through, resulting in two sheets lifted at once.



Rig-Master® Section
Master Catalog MC-607

Lifting Magnets



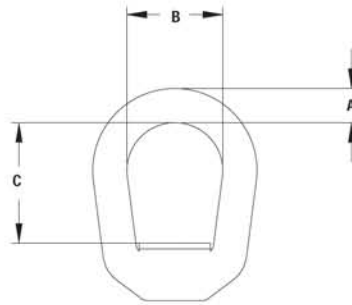
The Caldwell Group

Model RELM - Round Electric Lift Magnets



PRODUCT FEATURES:

- For use on flat material only.
- 115v. AC required.
- On, off and release functions are recessed to protect against accidental operation.
- Easy to use.
- Conforms to ASME B30.20.



SPECIFICATIONS

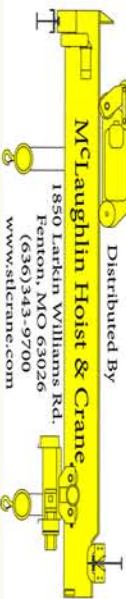
Model Number	Lift Capacity Plate (lbs.)	Watts	Unit Diameter (in.)	Overall Height (in.)	Bail Opening (in.)			Weight (lbs.)
					A	B	C	
RELM06	1,200	33	6-3/8	11-1/2	3/4	2	2-1/2	50
RELM08	2,500	51	8-3/8	12-7/8	3/4	2-1/4	2-7/8	75
RELM12	6,000	149	12-1/4	15-1/4	7/8	2-1/2	3-3/8	210
RELM16	9,000	260	16-3/4	15-1/2	7/8	2-1/2	3-1/2	300
RELM20	13,000	260	20	14-1/8	1	3-1/8	4	615

Note: RELM's are not intended to be used as scrap handling magnets.

WARNING

All capacities are based on lifting clean, smooth, flat low-carbon steel plate with the full area of the magnet's lifting surface in contact with the load. Derating is required for plates or other loads with rust or scale. Do not use on material thinner than 1/4".

Note: When lifting 4' x 8' sheets or any sheets over 4' x 8', use 2 or more lifts on a spreader bar to prevent sheet flexing, sagging, or peel-off. Material less than 3/8" thick is susceptible to magnet bleed through, resulting in two sheets lifted at once.



Distributed By
McLaughlin Hoist & Crane
1850 Larkin Williams Rd.
Ponton, MO 63026
(636) 343-9700
www.sdcrcrane.com

Rig-Master® Section
Master Catalog MC-607