



## MODEL EC Turnover Hoists

### EC Turnover Model Hoists

**COFFING EC Turnover Models** - Specially modified EC Hoist designed for machining, assembly, or repair applications which require complete rotation and/or precise positioning of large, non-symmetrical work pieces.

**CAPACITIES & LIFTS** - Rated loads from 1/4 to 4 Tons. Lift stroke is 15-foot standard. Consult factory for longer lift strokes.

**VOLTAGE** - 230/460, three phase motors standard. Consult factory for other voltages and two speed motors.

**SUSPENSION OPTIONS** - Rigid lug mount only. Allows attachment to load hook of another hoist for vertical lifting.

**TWO LOAD HOOKS** - Color coded load hooks with corresponding push button for operator convenience.

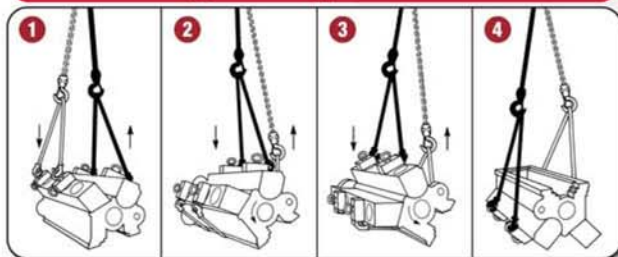
**OPERATION** - Load hooks operate in opposite directions.

**APPLICATION** - Completely inverts virtually any shape load with use of simple slings and successive repositioning of load hooks.

**ACCESSORIES** - Full line of options to meet a variety of applications. See pages 25-31.

#### LIFETIME WARRANTY

#### Typical Application



Engine block is raised straight up (1) by special cylinder lift rings, then rotated approximately 45° until one load hook (2) supports total weight. Sling is guided under block and attached to free hook (3). Hoist is then reversed (4) until block is inverted.

1/4 - 4 Ton  
Made in USA

#### • SPECIFICATIONS •

#### EC Turnover Hoists

Capacity			Model Number	Frame * Size	Load Chain Length (ft.)	Lift Stroke (ft.)	Motor HP	Lift Speed (fpm)	Headroom (in.)	Housing Dimensions (in.)			Net Wt. ** (lb.)
(lb.)	(kg) †	(Ton)								H	W	L	
500	250	1/4	EC-0516-TH	S	16	15	1/4	16	19 7/8	9 7/8	11 5/8	23 3/8	120
1000	500	1/2	EC-1016-TH	S	16	15	1/2	16	19 7/8	9 7/8	11 5/8	23 3/8	126
2000	1000	1	EC-2016-TH	S	16	15	1	16	19 7/8	9 7/8	11 5/8	23 3/8	138
4000	2000	2	EC-4016-TH	L	16	15	2	16	28 1/2	12 5/16	14 13/16	31 3/16	325
6000	3000	3	EC-6008-TH	L	34**	15	3	8	33	13 5/16	15 3/8	31 3/16	385
8000		4	EC-8008-TH	L	34**	15	3	8	33	13 5/16	15 3/8	31 3/16	390

† Metric rated option available.

\* S = Small frame hoist, single or three phase. L = Large frame hoist, three phase only.

\*\* Each load block is double-chained on 6000 lb. and 8000 lb. models.

