



McLaughlin Hoist & Crane



LINEMAN'S **PRODUCT** GUIDE

McLaughlin Hoist & Crane
Authorized Sales & Service

(636) 343-9700

www.stlcrane.com



- LINEMAN'S STRAP HOISTS
- CABLE HOISTS
- HAND CHAIN HOISTS
- SLINGS
- WIRE GRIPS
- LIFTING TONGS
- CANT HOOKS
- PEAVIES
- PIKE POLES





250A & 300A MODELS

The Lineman's Standard

Capacities

Rated loads of 1000 and 1500 lbs.- single line; 2000 and 3000 lbs.- double line.

Overload Protection

Handle bends to warn of hazardous condition and prevents dangerous overload.

Hooks with Latches

360° swiveling hooks equipped with latches for positive load engagement.

Positive Load Holding

Positive load holding in all environments. Double, interlocking pawl mechanism assures one pawl is engaged at all times.

Lightweight & Rugged

Special cast aluminum and zinc alloy housings.

Corrosion Resistant

All stainless steel springs and shafts.

Reduced Wear

All rotating shafts are mounted on bronze bushings.

Meets or Exceeds

Minimum 4:1 design factor and all requirements of ASME/ ANSI Standard B-30.21. All units tested at 125% of rated load.



322B & 344B MODELS

Advanced & Refined

Capacities

Rated loads of 1500 and 2000 lbs.- single line; 3000 and 4000 lbs.- double line.

Overload Protection

Handle tip bends to warn of hazardous overload. Handle tip replacement is easy and simple.

Enhanced Reversing Mechanism

Innovative design reduces the handle effort needed to release or lower a load. Double interlocking pawls assures positive load holding in all environments.

Compact Aluminum Alloy Frame

Features a double flanged strap drum and interrogated hook point for double line use.

Corrosion Resistant

All stainless steel springs and shafts.

Reduced Wear

All rotating shafts are mounted on bronze bushings.

Hooks with Latches

360° swiveling hooks can be equipped with a wide range of latch options.

Meets or Exceeds

Minimum 4:1 design factor and all requirements of ASME/ ANSI Standard B-30.21. All units tested at 125% of rated load.



See back for Strap Hoist hook options



6000A MODEL

The Transmission Specialist

- 6000 lb. Capacity, strongest Web Strap Puller available
- Extra large superior grade webbing with double side plate housing design.
- Positive load holding in all environments, provided by double interlocking pawl mechanism.
- Extremely low handle effort, provided by special 4:1 gear reduction.



Wire Grips

Rigging Products

- Forged steel construction, durable yet lightweight.
- Yellow Chromate finish protects components from rust and corrosion.
- All models are rated for a wide range of wire sizes – few grip changes.
- No lock up, grips can be opened and removed from the wire quickly.

See back for grip types & jaw options



RA 3/4 - 6 Ton

Ratchet Lever Hoist

- Standard lift is 5 feet.
- Dual ratchet and pawl design provides easy operation.
- Link chain.
- Aluminum housing.
- Multiple rigging options.



G Model 3/4 - 15 Ton

Ratchet Lever Hoist

- Standard lift is 5 feet.
- Single or double-locking pawl models available.
- Can be used to lift or pull.
- Easy operation from either side.
- Roller chain.
- Malleable iron housing.



LMSC 3/4 - 6 Ton

Ratchet Lever Hoist

- Standard lifts are 5, 10, 15 and 20 feet.
- Low handle effort.
- Short 360° rotating handle assures precise positioning.
- Optional load limiter available.
- Easy to free chain.



TB-602 550 lb.

TB-603 1100 lb.

Ratchet Lever Hoists

- 5 ft. and 10 ft. lifts available.
- Hardend link-type steel load chain and Weston-type load brake are standard.
- Lightweight and compact. Easy tool box storage.



LMR 3/4 - 3 Ton

Ratchet Lever Hoist

- Standard lifts are 5, 10, 15 and 20 feet.
- Easy to free chain.
 - Short handle with low handle effort.
 - Link chain.
 - Aluminum housing.

Slings

Rigging Products

- Slings are available in many different styles
- Sizes range from 7/32" through 3/4"
- Working load limits available up to 91,700 lbs.
 - Specialty slings built to order.



Cable Hoists

1/4 - 2 Ton

Wire Rope Hoist

- Single and double line.
- Reversible handle bends when overloaded.
- Lightweight and rugged.
- Meets ANSI/ASME Standard B-30.21.



Lifting Tongs

Utility Products

- Certified and Proof Tested alloy product for overhead lifting; affixed with a permanent metal identification tag
- Tong shape has been designed to provide a sure grip on poles and logs.
- Meets the requirements of ASME B30.20 Below-the-Hook Lifting Devices, Group 1, Section 20-1.2.1 and 20-1.4 for marking and testing.

Pikes & Midget Pike Poles

Utility Products

- Handles turned from second growth American ash with straight grain through entire handle length and air dried.
- Offered in lengths from 3 feet through 16 feet, normally in two foot increments.
- Pike hook manufactured from a single piece of high carbon steel and drop forged.
- Curved pike and hook and straight pike available on a special order basis.



Cant Hooks & Peavies

Utility Products

- Handles turned from select White Mountain Hickory air dried to 18% moisture content.
- Precision fitted with the finest tool available to the industry.
 - Duckbill hooks are drop forged high carbon steel with the bill ground to a fine point.
 - This one piece unit makes field repairs easier.

HOOK OPTIONS

For Strap Hoist Models



B

Standard Hook

Forged steel hooks provide lasting strength and durability. Hooks will bend open under extreme overload situations. Latches are standard.



DB

Hot Stick Hook

Hot Stick hooks have a welded ring for use with holding sticks. Latches are standard.



CB

Swivel Gate Hook

Bullard-type, swivel gate latch provides positive locking action for secure load holding in all environments.



DHB

Hot Stick Hook & Gate Latch

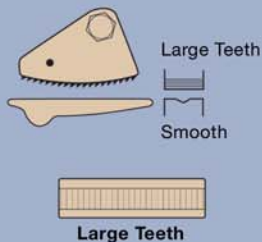
Hot Stick gate latch models have rings on the latch and the hook for use on energized lines. Holding sticks easily maneuver the latch and hooks.

JAW OPTIONS

For Wire Grips

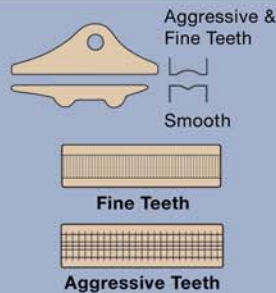


BULLDOG-TYPE JAW



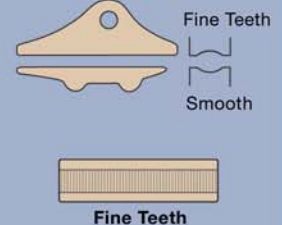
1000 & 2000 lb.

PARALLEL JAW



5000 & 10,000 lb.

PARALLEL JAW



12,000 & 20,000 lb.



Little Mule Lineman's Products

2020 Country Club Road • P.O. Box 779
Wadesboro, NC 28170 USA

Tel: (800) 477-5003 • (704) 694-2156

Fax: (800) 374-6853 • (704) 694-6829

Email: coffing@cmworks.com

www.coffinghoists.com



LMUPG-1207

15M 12/07

©2007 Little Mule Products

Printed in USA